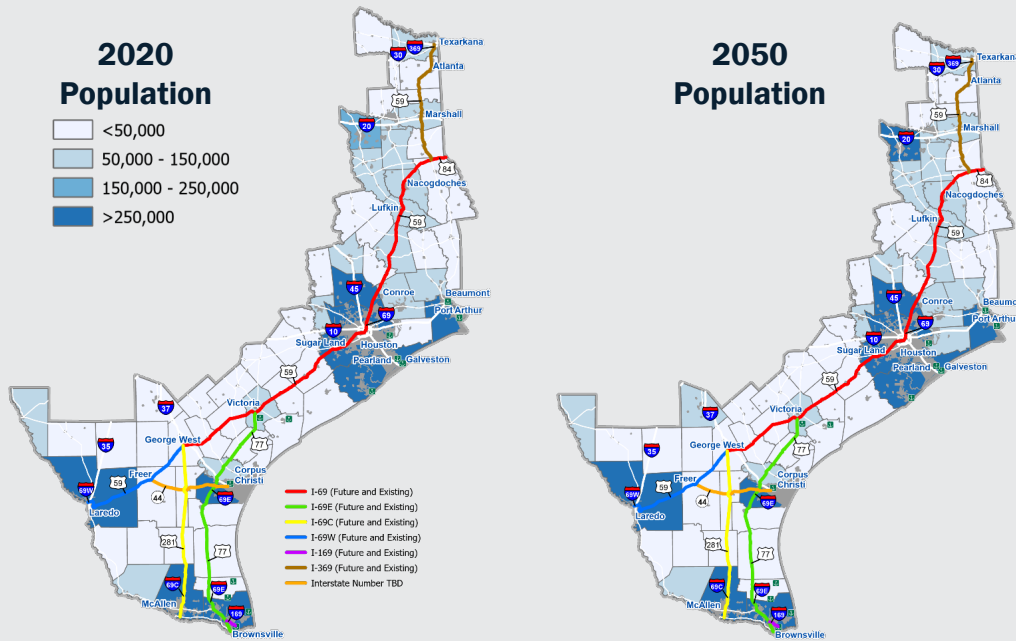


Dramatic Growth in Population, Employment and Trade Projected for I-69 System Counties

Population in the I-69 System Region



Top Counties (2020)

11.3M
(38.7% of TX)

1. Harris
2. Hidalgo
3. Fort Bend
4. Montgomery
5. Cameron

+38.3% population growth projected.

Top Counties (2050)

15.7M
(38.1% of TX)

1. Harris
2. Fort Bend
3. Hidalgo
4. Montgomery
5. Brazoria

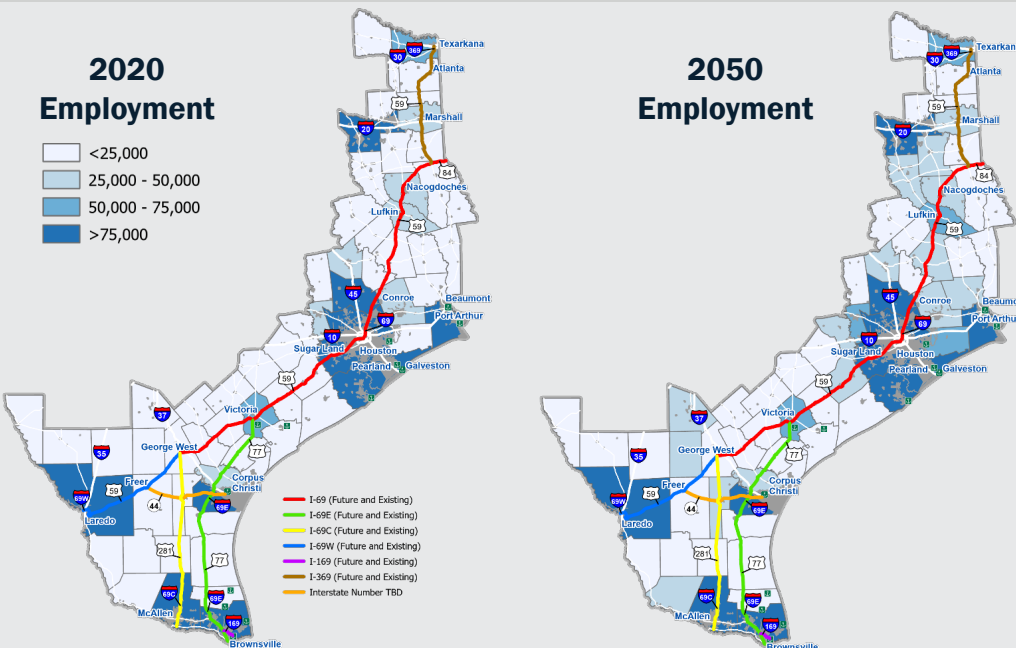
Source: Woods & Poole, 2022

TxDOT, I-69 Texas, Freight Plan Updates

Nov. 18, 2022

6

Employment in the I-69 System Region



Top Counties (2020)

6.3M
(36.5% of TX)

1. Harris
2. Hidalgo
3. Fort Bend
4. Montgomery
5. Nueces

+65.3% employment growth projected.

Top Counties (2050)

10.3M
(33.9% of TX)

1. Harris
2. Fort Bend
3. Hidalgo
4. Montgomery
5. Brazoria

Source: Woods & Poole, 2022

TxDOT, I-69 Texas, Freight Plan Updates

Nov. 18, 2022

7



The Alliance for I-69 Texas

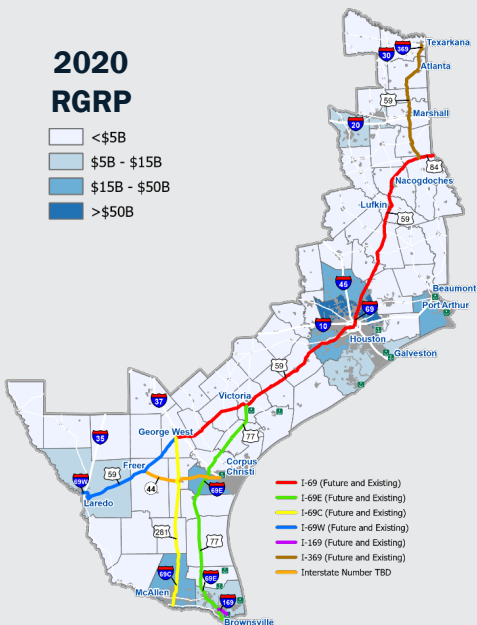
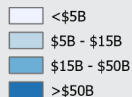
Working to Better Connect Texas Communities and Create Economic Opportunities

Double the Regional GDP and Double the Freight Tonnage by 2050

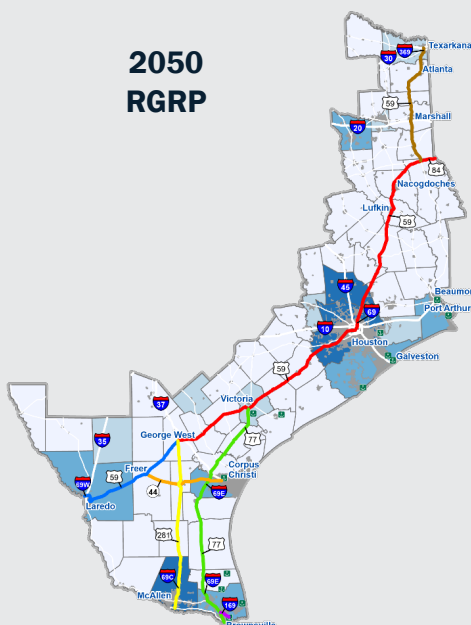
Real Gross Regional Product (RGRP) in the I-69 System Region



2020 RGRP



2050 RGRP



Top Counties (2020)

\$589.9_B
(37% of TX)

1. Harris
2. Montgomery
3. Fort Bend
4. Hidalgo
5. Jefferson

+107% RGRP growth projected.

Top Counties (2050)

\$1.2_T
(33.6% of TX)

1. Harris
2. Fort Bend
3. Montgomery
4. Hidalgo
5. Jefferson

Source: Woods & Poole, 2022

TxDOT, I-69 Texas, Freight Plan Updates

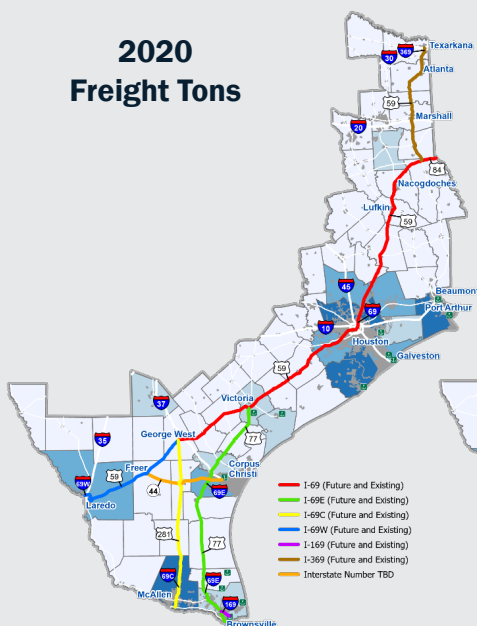
Nov. 18, 2022

8

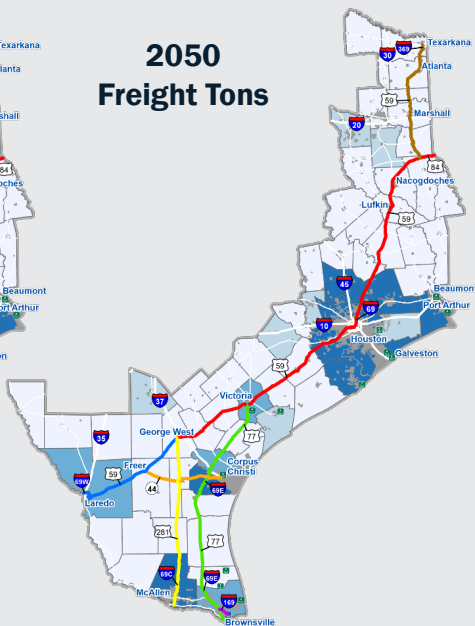
Freight Tonnage (Tons) Inbound & Outbound Along the I-69 System Region



2020 Freight Tons



2050 Freight Tons



Top Counties (2020)

543.6_M

1. Harris
2. Brazoria
3. Jefferson
4. Hidalgo
5. Nueces

+92.6% freight tonnage growth projected.

Top Counties (2050)

1.05_B

1. Harris
2. Brazoria
3. Jefferson
4. Hidalgo
5. Montgomery

Source: Transearch (IHS Markit), 2021

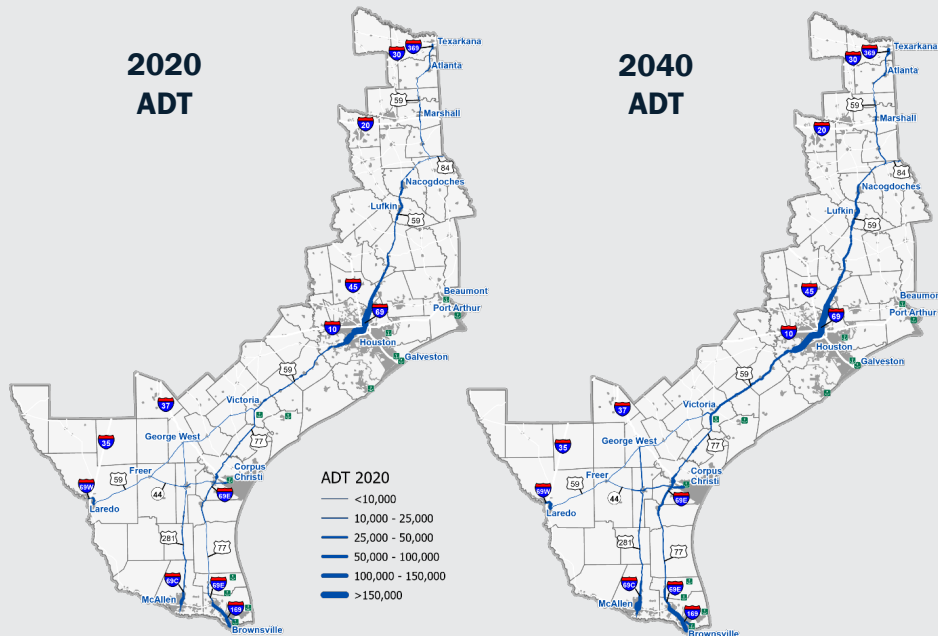
TxDOT, I-69 Texas, Freight Plan Updates

Nov. 18, 2022

9

Traffic Volumes Will Continue to Go Up Including Truck Movements

Average Daily Traffic (ADT) Volumes Along the I-69 System



The I-69 system will experience an average traffic volume growth of

76.2%

between 2020 and 2040.

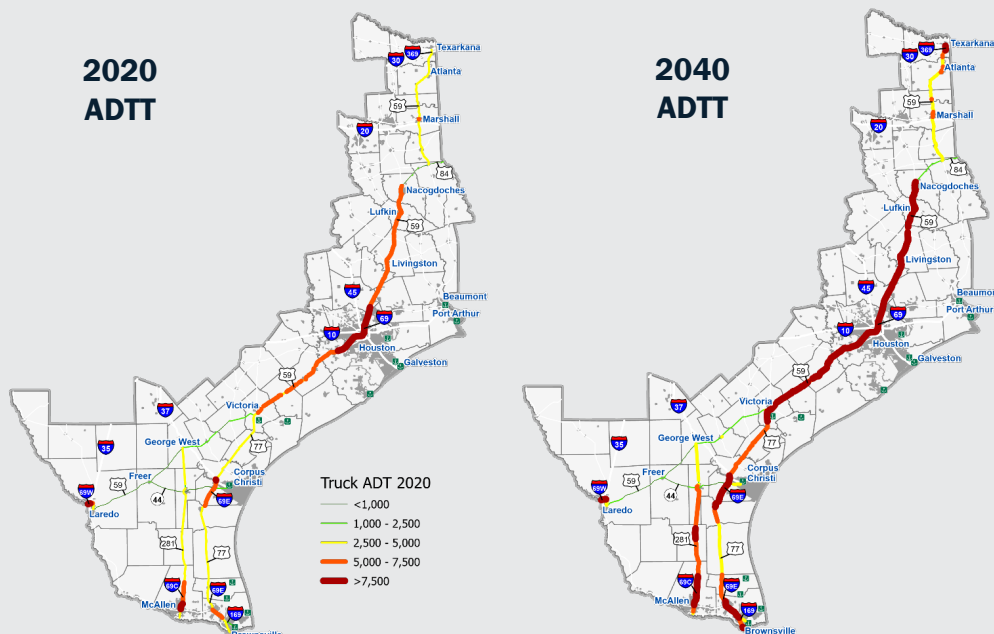
Traffic volumes are forecasted to **double** along

306 miles

of the I-69 System between 2020 and 2040.

Source: TxDOT Roadway Inventory, 2020

Average Daily Truck Traffic (ADTT) Along the I-69 System



The I-69 System is forecasted to experience

69%

growth in average daily truck traffic from 2020 to 2040.

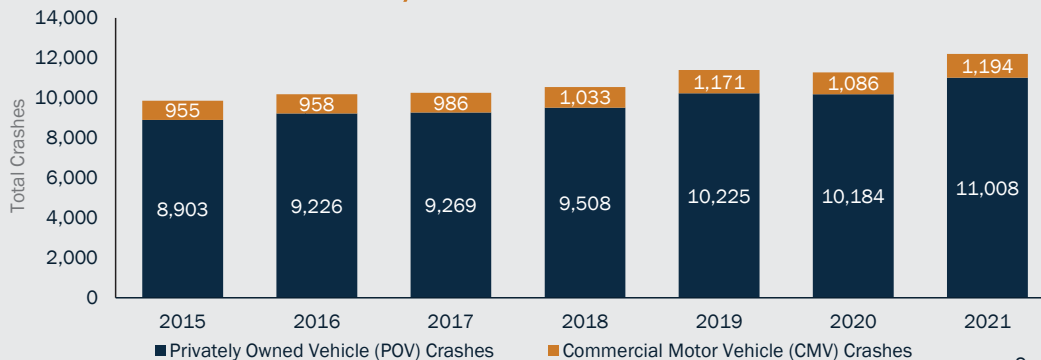
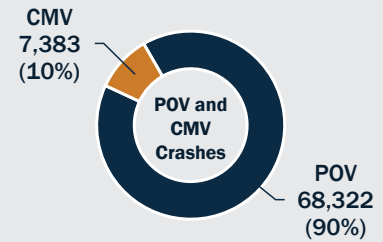
Source: TxDOT Roadway Inventory, 2020

Crash Data Shows Growing Danger

Total Crashes Along the I-69 System (2015-2021)



75,705 total crashes

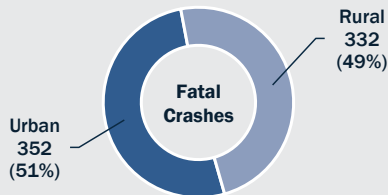


Source: TxDOT C.R.I.S., 2022

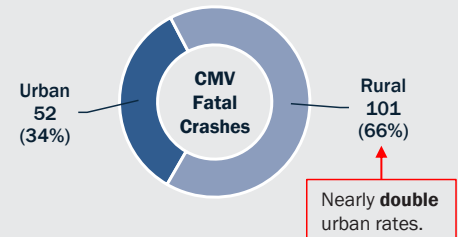
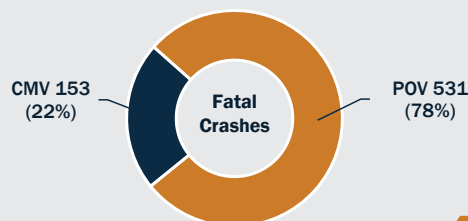
TxDOT, I-69 Texas, Freight Plan Updates

Nov. 18, 2022 **15**

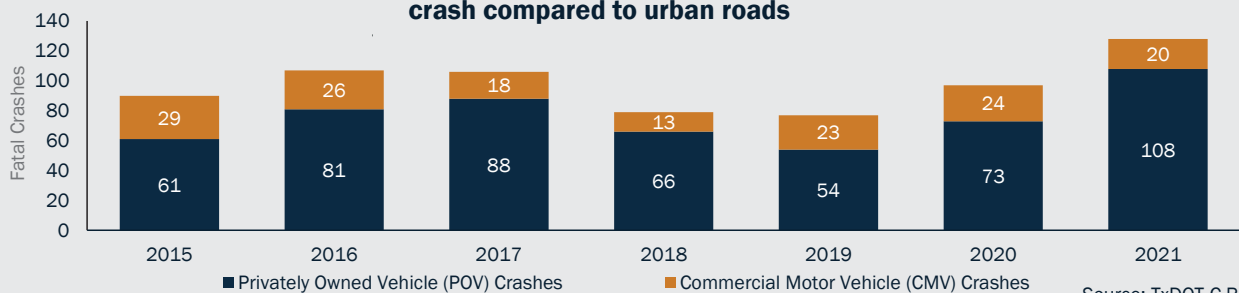
Fatal Crashes Along the I-69 System (2015-2021)



684 total fatal crashes



Drivers involved in a crash on rural roads on the I-69 System are nearly **4x** more likely to end up in a fatal crash compared to urban roads



Source: TxDOT C.R.I.S., 2022

TxDOT, I-69 Texas, Freight Plan Updates

Nov. 18, 2022 **16**



Alliance for I-69 Texas

Alliance Contacts: Jennifer Shepard, Alliance Executive Director - (703) 963-3822; Jennifer@jgshepard.com
 Larry Meyers - Washington Representative - (202) 484-2773; LMeyers@hslawmail.com
 Don Rodman - State Adviser and Communications - (361) 877-0409; Don@therodmanco.com
 Judge Sydney Murphy, Alliance Board Chairman - (936) 327-6813; smurphy@co.polk.tx.us

www.i69TexasAlliance.com

January 2023